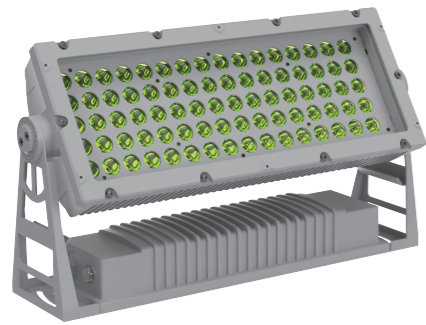


KF3

KOLORMAX KF3, use of lightweight aviation aluminum, energy saving design, the weight of the whole fixture only 11.4kg, green lighting energy consumption ratio of 2062lm/kg, high-efficiency power 4-in-1 RGBL LED chip, with a new heat dissipation distribution structure, to ensure that LED in high-intensity operation stable and reliable, durable. Unique high-end optical design, easily get an accurate mixed single color or multi-color, and the light efficiency up to 64lm/w, leading the new concept of lighting energy saving. It has a variety of lens angles options, suitable for landscape, building, pedestrian street and other scenes. Segment control with intelligent dimming technology makes the color change transition more delicate and naturally. Whether it is a landmark or a bridge, KOLORMAX KF3 can show extraordinary light effect for you.



TECHNICAL PARAMETER

Product code: AM1362KXLET

Max. Power: 400W

Light source: 4 in 1 RGBL

Luminous Flux: 25778lm

Peak Intensity: 94826cd(15°)

CRI: Ra: 85

CTO: 1800K-10000K

Built-in colors: 24 preset colors

Con Personality: DMX512, RDM

Operating voltage: AC220V-50/60Hz

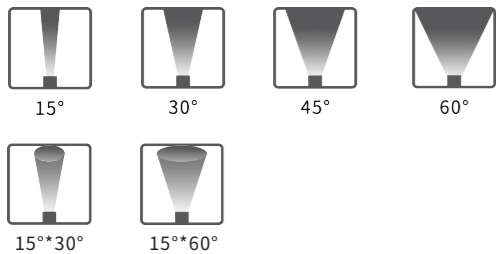
Working Temperature: -20°C~45°C

Protection Level: IP67

Dimensions (L*W*H): 521*119*284mm

weight: 11.4kg

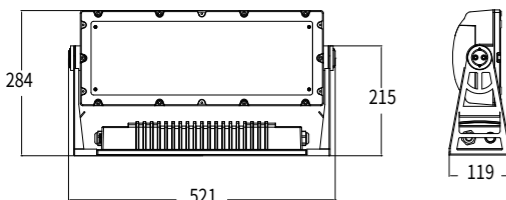
ANGLE



SPECIFICATIONS



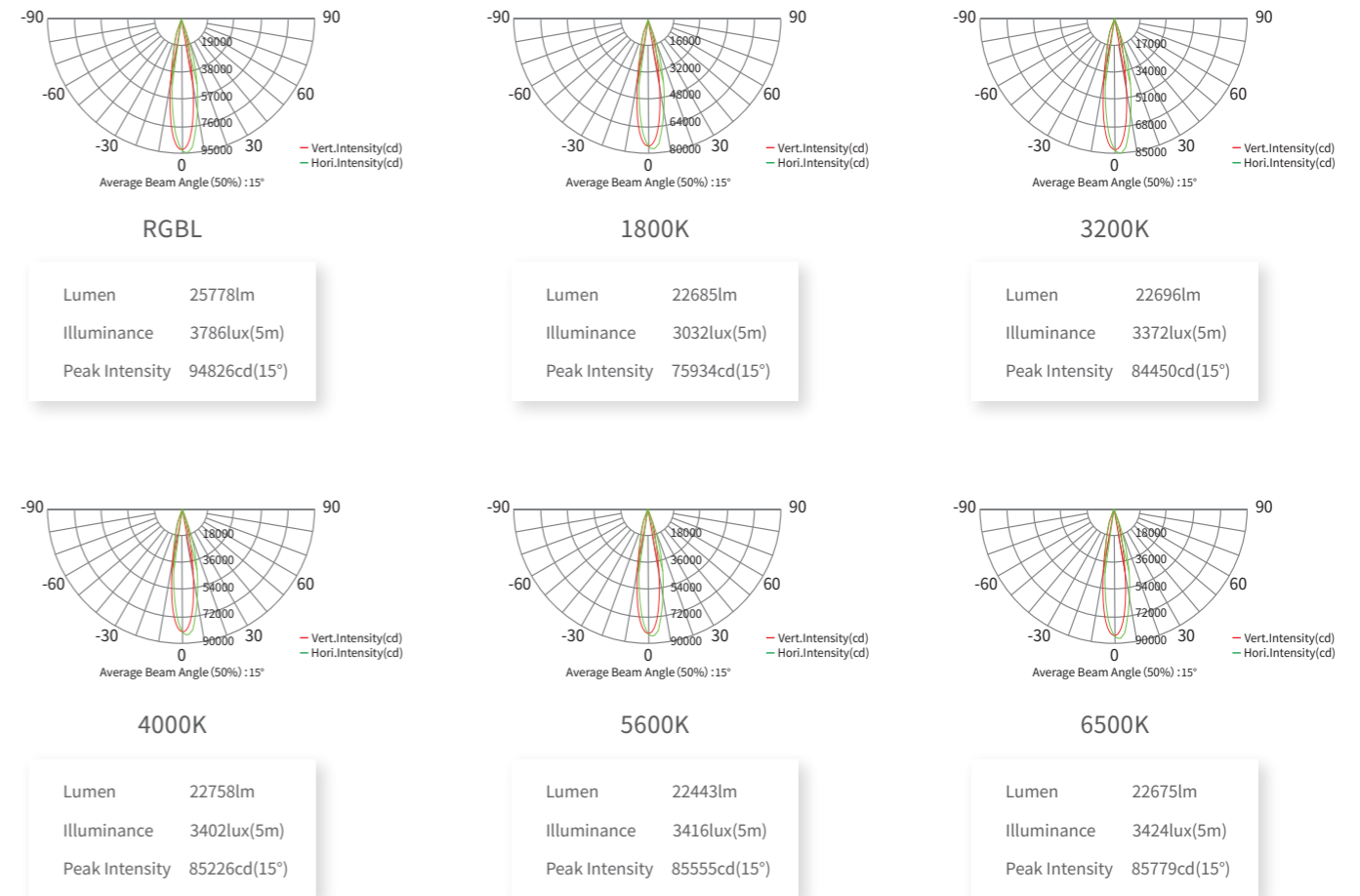
DIMENSIONAL DRAWING



OPTIONAL ACCESSORIES



LIGHT DISTRIBUTION DIAGRAM (* THE ABOVE COLOR TEMPERATURES ARE ACHIEVED BY YAJIANG DIGITAL COLOR TECHNOLOGY AND CCS TECHNOLOGY)



ILLUMINANCE AT DISTANCE

